

JCB-CMH150P

Original Instructions

IM-CMH150P-EN



| Contents | Page Number |
|---|--------------------|
| Introduction | 3 |
| General Warning & Disposal | 4 |
| Safety information | 5-10 |
| Machine Specific Warnings | 11 |
| Unpack, Tools Required for Assembly & Box Contents | 12 |
| Assembly | 13-16 |
| Handle Assembly | 13 |
| Wheel Assembly | 14 |
| Stand Assembly | 15-16 |
| Operation | 17-24 |
| Intended Use | 17 |
| General Operation | 17 |
| Working Positions | 18 |
| Tilt Lock Levers | 19 |
| Pre-Operation Checks | 20 & 21 |
| Oil Level | 20 |
| Air Filter | 20 |
| Fuel Level | 21 |
| Starting | 22-23 |
| Stopping | 24 |
| Mixing Tip | 24 |
| Maintenance & Care | 25-30 |
| Importance of Maintenance | 25 |
| Maintenance Schedule | 26 |
| Oil Servicing | 27 |
| Spark Plug Maintenance | 28 |
| Sediment Filter Maintenance | 29 |
| Storage | 30 |
| Troubleshooting | 31 |
| Specifications | 32 |
| Cleaning & Transportation | 33 |
| Parts Diagram | 34 |
| Parts List | 35 |
| Warranty | 36 |
| Manual Updates | 36 |
| Returning Your Product | 36 |
| Leaving a Review | 36 |
| Ordering Spare Parts | 36 |
| Contact Us | 37 |
| CE Declaration of Conformity | 38 |

Introduction

We work very hard to give all of our customers the best possible service. If you have any problems, before leaving negative feedback, please contact us to give us a chance to resolve the issue. We would be delighted if you left us positive feedback! Thank you for purchasing this product.

Important!



WARNING: READ THE INSTRUCTION BOOKLET THOROUGHLY BEFORE USING THE MACHINE.

Keep for future reference and pass it on if the machine is loaned or sold to another user.

This manual has been produced by JCB Tools, and should be kept with the product. Please read and understand these instructions before you use your product. Failure to do this may result in personal injury or damage to the product.

The safety precautions and warnings are to ensure your safety and protect you from harm or damage to the product.

The information contained in this manual was accurate at the time of production, however JCB Tools may make modifications to the product without notification.



GENERAL WARNINGS & DISPOSAL

You will find the following Symbols and Icons on the stickers of your machine. Please take note when you see them as they mean the following:



To reduce the risk of injury, the user must read the instruction manual



This symbol is used throughout this manual to warn the user about potential risks. Please read & understand these sections before using the device.



Personal Protective Equipment (P.P.E.) to be worn during operation such as:

- Gloves and Hand Protection
- Safety Glasses and Eye Protection
- Ear Defenders for Sound Protection
- Protective Head gear



Work Space Warnings :

- Only Machine operators should be close to the machine
- A safety boundary of 12m should be adhered to during operation.



Projectile Warnings. Because of the nature of the machine, there's a possibility of projectiles. Wear correct PPE and keep bystanders away from the machine.



Rotating Parts Warning : The machine has rotating mechanical parts. NEVER insert your hand in the machine.



Sharpened Impeller and Angle Blade Warnings : The machine contains a sharpened impeller with angles blades which will cause serious injury if not operated correctly.




Smoking and Drugs Warning: NEVER smoke whilst operating the machine due to close proximity of flammable liquids. Also NEVER operate the machine under the influences of drugs including smoking and alcohol.

Safety Information

General Safety

No list of safety guidelines can be complete. Every environment is different. Always consider safety first, as it applies to your individual working conditions. Use this and other machinery with caution and respect. Failure to do so could result in serious injury, damage to equipment, or poor work results.

 This symbol is used throughout this manual to warn the user about potential risks. Please read & understand these sections before using the device.

Understand Your Machine

- **WARNING!** You must read these instructions carefully before operating the machine. Make sure that you are familiar with the controls and properly operate the machine. You must learn how to stop the machine quickly. If you do not follow the warnings and instructions, it may result in fire and/or serious injury. Make sure to save all warnings and instructions for future reference.
- Read this manual and labels affixed to the machine to understand its limitations and potential hazards.
- Be thoroughly familiar with the controls and their proper operation. Know how to stop the machine and disengage the controls quickly.
- If the unit is to be used by someone other than original purchaser, or is to be loaned, rented, or sold, always provide this manual and any needed safety training before operation. The user can prevent and is responsible for accidents or injuries that may occur to themselves, to other people, or to property.
- Do not force the machine beyond its limits. Use the correct machine for your application.
- Know how to stop the machine quickly in case of emergency. Understand the use of all controls.
- ALL MAINTENANCE other than that listed in this manual, should be carried out by professionally trained and certified personnel.
- When using this machine for the first time and before actual work, you **MUST** learn how to handle the machine from an experienced or skilled person.



Safety Information

Personal Safety

- **WARNING!** Never allow children or people unfamiliar with these instructions to use the product. Local regulations can restrict the minimum age of the operator.
- Keep children, pets, and other people not using the unit away from the work area (at least 15m). Be alert and shut off the unit if anyone enters work area. Keep children under the watchful care of a responsible adult.
- Stay alert, watch what you are doing and use common sense when operating the machine. Never operate the machine when unwell or tired, or if you have taken alcohol, medicine, drugs or any substances which may slow your reflexes and compromise judgment. A moment of inattention while operating the machine may result in serious personal injury.
- Appropriate Personal Protective Equipment (PPE), **MUST** be worn at all times when operating or repairing the machine. Always wear anti-slip and resistant work footwear and long trousers while using the machine. Do not use the machine when barefoot, wearing sandals or similar lightweight footwear. Do not wear chains, bracelets or clothing that is loose fitting or hanging ties or cords. Tie long hair back. Always wear protective earplugs. Loose clothes, jewellery, or long hair can be caught in moving parts. Protect eyes, face, and head from objects that may be thrown from the unit. Always wear safety goggles or safety glasses with side shields when operating.
- Always keep hands and feet away from all moving parts during operation. Moving parts can cut or crush body parts. Always keep hands and feet away from all pinch points.
- Do not touch parts that might be hot from operation. Allow parts to cool before attempting to maintain, adjust, or service.
- Never place any part of your body where it would be in danger if movement should occur during assembly, installation, and operation, maintenance, repairing or moving.
- Start the machine carefully according to instructions.
- Keep in mind that the operator or user is responsible for accidents, hazards or unexpected events involving the machine that occur to other people or their property. It is the responsibility of the user to assess the potential risk of the area where work is being carried out. The operator or user must take all necessary precautions to ensure their own safety and that of others, especially on slopes or rough, slippery and unstable ground.

Safety Information

Inspect Your Machine

- Check your machine before starting it. Keep guards in place and in working order. Make sure all nuts, bolts, etc., are securely tightened.
- You must check the general condition of the machine before use.
- Never operate the machine when it is in need of repair or is in poor mechanical condition. Replace damaged, missing, or failed parts before using it. Check for fuel leaks. Keep the machine in safe working condition.
- Do not use the machine if the engine's switch does not turn off the engine when running. Any petrol powered machine that can't be controlled with the engine switch is dangerous and must be replaced.
- Regularly check to see that keys and adjusting wrenches are removed from the machine area before starting it. A wrench or a key that is left attached to a rotating part of the machine may result in personal injury.
- If the machine should start to vibrate abnormally, stop the engine and check immediately for the cause. Vibration is generally a warning sign of trouble.
- Avoid accidental starting. Be sure the engine's switch is off before transporting the machine or performing any maintenance or service on the unit. Transporting or performing maintenance or service on a machine with its switch on invites accidents.
- Do not tamper with or disable safety systems.
- Only use manufacturer-recommended attachments.
- Before using, always visually inspect to see that the tools are not worn out or damaged. Replace worn out or damaged elements and bolts in set to preserve balance.
- Keep the machine in good operating condition. Operating the machine in poor or questionable condition could result in serious injury.
- Be sure all safety devices are in working order and warning labels are in place. These items are installed for your safety.

Safety Information

Work Area

- Make sure you thoroughly inspect the entire work area. You must only work in daylight or with good artificial light in good visibility conditions. Do not work at night, at times of heavy fog, or at any other times when your field of vision might be limited and it would be difficult to gain a clear view of the area.
- Keep people, children and animals away from the working area.
- Operate on flat, level ground.
- Never leave the machine in a place with unstable ground which could give way.
- You must be careful near ravines, ditches or embankments.
- Exercise extreme caution when operating on or crossing gravel drives, walks, or roads. Stay alert for hidden hazards or traffic.
- Pay the utmost attention when working on frozen ground as the machine may tend to slide.
- Do not work in the rain, when there is a thunderstorm or lightning risk, at times of strong or gale force winds, or at any other times when the weather conditions might make it unsafe to use this product. If there is bad weather conditions, do not use the machine.

Machine Specific Safety

- Never Use the machine in wet conditions
- This machine is powered by flammable fuel which can result in a fire or explosion, causing serious injury.

Carbon Monoxide Warning

BREATHING IN CARBON MONOXIDE FUMES CAN CAUSE DEATH! Using this machine indoors CAN KILL YOU IN MINUTES! The exhaust fumes from machines contain Carbon Monoxide. This is a poisonous gas that you can't see or smell.

- NEVER use inside a building.
- NEVER use inside a confined space such as but not limited to a house, garage, large vehicle, boat or tent.
- Never operate the machines near other machines which use flammable liquids as a fuel source.
- Only use the machine outside far away from open windows, doors and vents.

Safety Information

Fuel Safety



CAUTION! ALL FUELS ARE HIGHLY FLAMMABLE & PETROL VAPOUR IS EXPLOSIVE. TAKE EXTREME CARE WHEN HANDLING FUEL. KEEP FUEL OUT OF REACH OF CHILDREN.

- NEVER smoke when handling fuel.
- ALWAYS avoid inhaling fumes.
- ALWAYS carry fuel in the correct and clearly marked container.
- ALWAYS wear correct, suitable and fit for purpose Personal Protective Equipment (PPE), suggested items are but not limited to safety gloves and overalls.
- To avoid sparking or arcing, keep grounded conductive objects such as tools away from exposed, live electrical parts and connections. These events could ignite fumes or vapours.
- Do not operate the machine with known leaks in the fuel system.
- Fire hazard - keep fuel away from all sources of ignition for example heaters, lamps, sparks from grinding or welding.
- DO NOT carry out hot work on tanks that have contained fuel.
- ALWAYS keep the work area tidy.
- ALWAYS dispose of waste fuels correctly.
- Serious personal injury can occur when petrol is spilled on yourself or your clothes. Rinse your skin and change your clothes immediately.

Spilled Fuel

- If you have spilled fuel, make sure you do not attempt to ignite the engine but move the machine away from the area of spilled fuel and avoid creating any source of ignition until the fuel has evaporated and fuel vapours have dissipated.
- When fuel is spilled on yourself or your clothes, wash your skin and change clothes immediately.
- ALWAYS clean up spills promptly using absorbent granules and a lidded bin.



Safety Information

Fuelling / De-Fuelling

- ALWAYS fuel and de-fuel in a well ventilated area outside of buildings. Use a funnel to add fuel, only outdoors. Do not smoke during this and each time fuel is handled.
- Add fuel before igniting the engine, never remove the fuel tank cap or add fuel whilst the engine is running or when it is hot.
- When de-fuelling ALWAYS use a proper fuel retriever.
- Never overfill the fuel tank. Engine heat can cause fuel to expand, never fill the tank to more than 1/2" below the bottom of the filler neck. This will provide space for fuel expansion.
- When refilling or draining the fuel tank, use an approved fuel storage container while in a clean, well-ventilated outdoor area. While adding fuel or operating the unit, do not smoke, and stay away from sparks, open flames, or other sources of ignition near the area of operation.
- Always stop the engine and allow it to cool before filling the fuel tank. Never remove the cap of the fuel tank or add fuel while the engine is running or when the engine is hot.
- Loosen the fuel tank cap slowly to relieve any pressure in the tank.
- ALWAYS keep the handles dry, clean and free of oil and fuel.
- After fueling, ensure to tighten the cap securely.
- Never use the lock-function when filling with fuel.

Storage

- Store fuel in containers specifically designed and approved for fuel storage.
- Store fuel in a cool, well-ventilated area, safely away from sparks, open flames, or other sources of ignition.
- Never store fuel or a machine with fuel in the tank inside a building where fumes may reach a spark, open flame, or any other source of ignition (such as a water heater, furnace, or clothes dryer). Allow the engine to cool before storing in any enclosure.
- Replace all fuel tank and container caps securely and wipe up spilled fuel. Never operate the unit without the fuel cap securely in place.

MACHINE SPECIFIC SAFETY WARNINGS

WARNING!

WARNING! When using electric tools basic safety precautions should always be followed to reduce the risk of fire, electric shock and personal injury including the following. Read all these instructions before attempting to operate this product and save these instructions

1. The owner must ensure that only qualified persons operate, maintain or repair this machine.
2. Before attempting any maintenance, switch off the motor, and isolate from the main power supply.
3. All portable electric appliances are dangerous if used incorrectly. This machine will operate on 230/110 volts. Check the power supply to ensure it corresponds to the voltage as indicated on the rating label.
4. It is advisable to always use as Residual Current Device ("RCD"), (earth leakage trip), plugged directly into the 230/110 volt socket. If using an extension cable, plug it directly into the RCD.
5. If using an extension cable it must be no more than 20 metres in length, the wire section must be 1.5 mm². Ensure the extension cable is carefully laid out avoiding liquids, sharp edges and vehicles running over it. Do not allow the cable to become trapped underneath the mixer. Unroll it completely so the cable does not overheat. Ensure the cable connections (plug and socket) are dry and safe.
6. When not in use, store this machine in a dry, locked place. Keep away from children.
7. The 230/110 volt motor is IP44 protected.
8. Fitted with a NO VOLTAGE RELEASE switch - if power supply fails the machine will stop, re-start the mixer by pressing the green button.

Your JCB Concrete Mixer has been designed with safety in mind. However, as with any type of machinery, some basic DO's and DONT'S apply:

Do's :

- **ALWAYS OPERATE THE MACHINE ON A LEVEL SURFACE.**
- Have the drum rotating when discharging the mix.
- Wear protective clothing i.e. safety footwear, gloves, safety goggles, ear protectors etc.
- Use caution when assembling and transporting the mixer.
- Keep the drum free from debris and mortar build-up (clean after every use). Do keep all moving parts lightly greased (wheel axles, swivel brackets ...etc.)
- Periodically inspect your mixer for abnormal wear or damage.

Don'ts:

- Place your hand or hands in or around any part of the drum while it is rotating.
- Place any tools or implements in or around the drum while it is rotating.
- Operate the mixer on an uneven surface.
- Operate this machine on a steep gradient.
- Operate in close proximity to children or animals.
- Allow any persons under the age of 16 to operate the machine.
- Stop and start the mixer with material in the drum, this will damage the motor and gearbox.
- Allow water to contact the motor or electrical connections
- Wear loose fitting clothes, risk of entanglement with the mixer
- Operation under the influence of drugs or alcohol
- Operate this machine when it is being moved.

When discharging the mix, grip both handles firmly and tip mixer forward. Lock in the forward position by engaging the axle clip. Start the mixer by pressing the green switch on the motor.
Stop the mixer by pressing the red switch on the motor.

Unpack

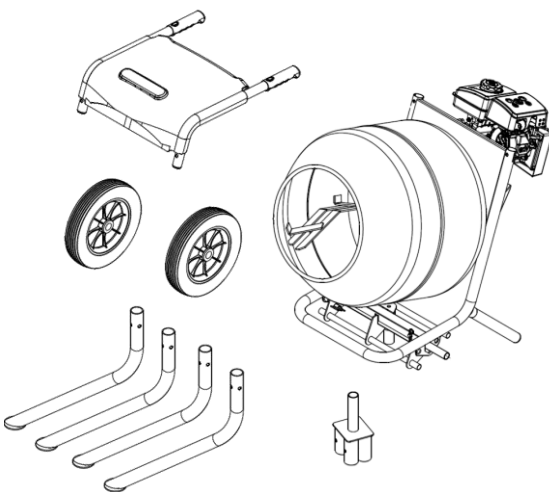
1. Unpack all parts and lay them on a flat, stable surface.
2. Remove all packing materials and shipping devices if applicable.
3. Make sure the delivery contents are complete and free of any damage. If you find that parts are missing or show damage do not use the product but contact your place of purchase. Using an incomplete or damaged product represents a hazard to people and property.
4. Ensure that you have all the accessories and tools needed for assembly and operation. This also includes proper personal protective equipment.

Tools required for Assembly

The following items are **NOT** included with the machine:

- Suitable PPE (gloves, eye protection etc..)
- Crosshead Screwdriver
- Spanners – 1x10mm, 1x13mm, 1x17mm, 1x19mm
- General Purpose Grease
- Hammer or Mallet

Box Contents

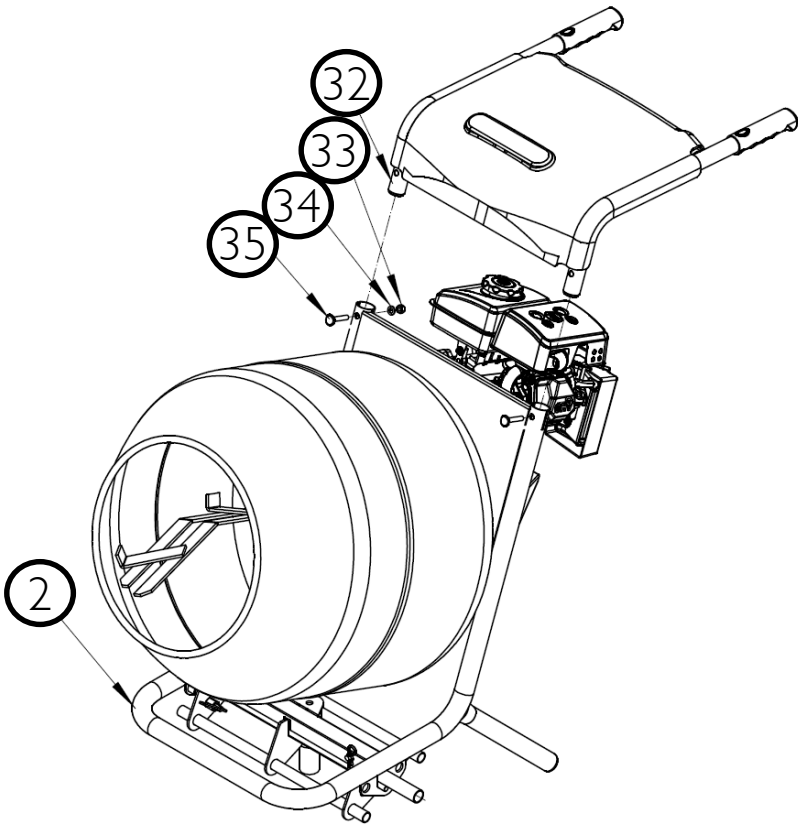


| | | |
|--|----------------------|----|
| | R Clip $\Phi 3.4$ | X2 |
| | Bolt M8x45 | X2 |
| | Flat Washer M8 | X2 |
| | Nut M8 | X2 |
| | Hex.head bolt M10x25 | X1 |
| | Wheel bung | X2 |
| | Pinned plate | X2 |

Handle Assembly

Insert the handle (32) into chassis (2) using Umbrella Bolt M8x45 (35), Flat washer M8 (34) and Nut M8 (33), Tighten securely.

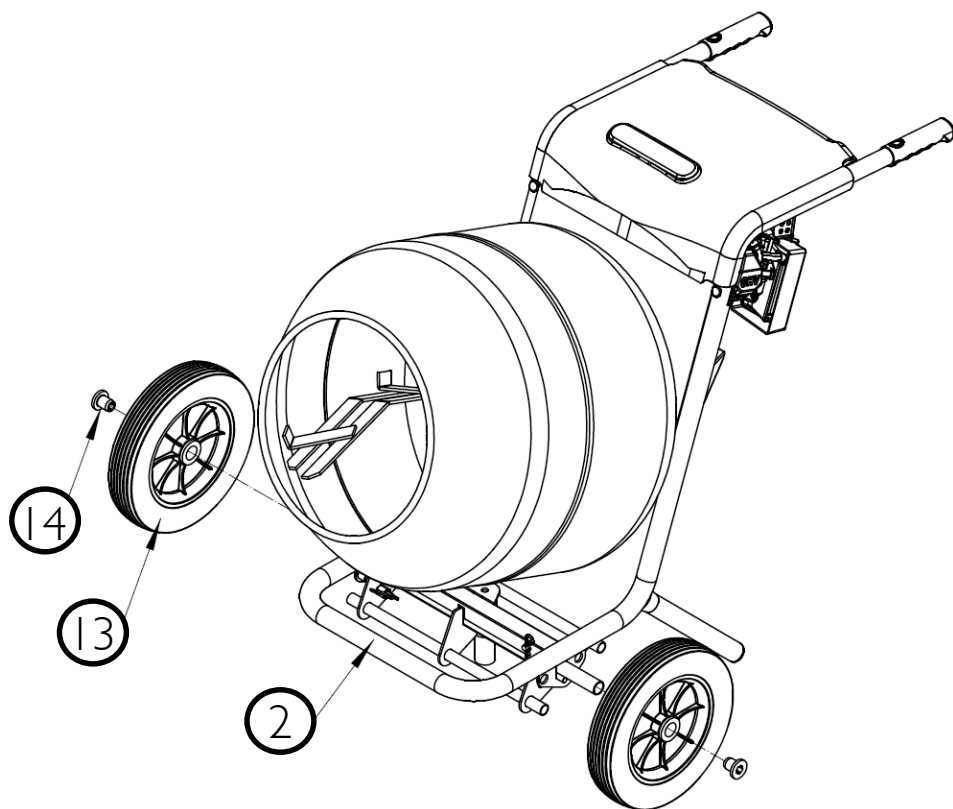
| | |
|------------------------|--|
| Umbrella Bolt M8x45 x2 | |
| Flat Washer M8 x2 | |
| Nut M8 x2 | |



Wheel Assembly

Slide the wheels (13) onto the axles and secure by banging in the wheel bungs (14) with a hammer or mallet.

Wheel Bungs

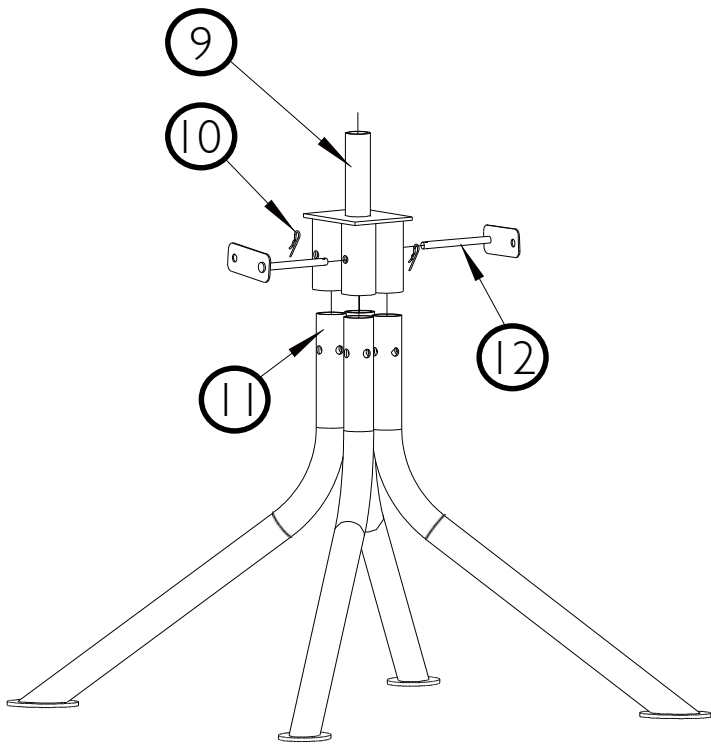


Stand Assembly

Insert the four feet (11) into the stand connector (9) and secure with two Pinned plates (12) and R-clips (10) provided.

| | |
|------------|--|
| R-clips x2 | |
|------------|--|

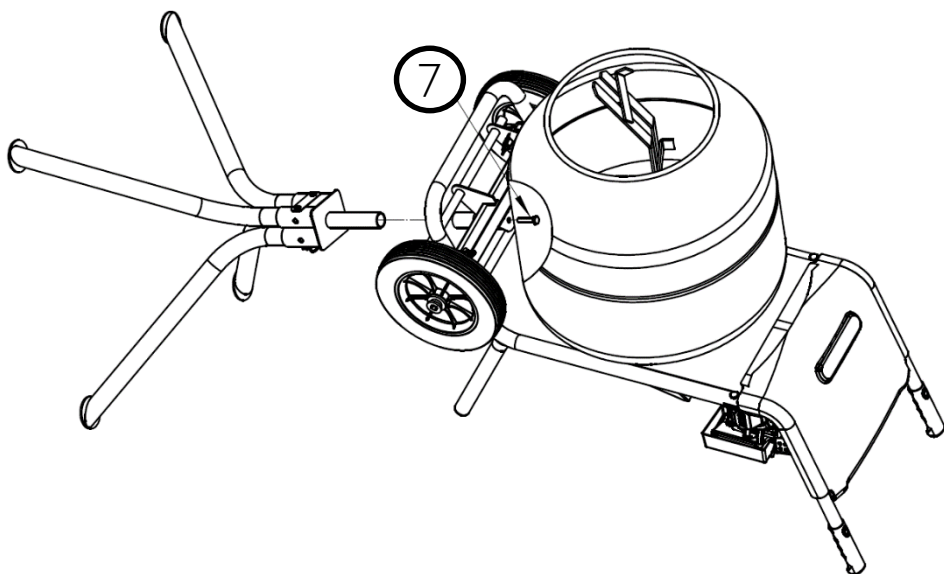
| | |
|------------------|--|
| Pinned Plates x2 | |
|------------------|--|



Stand Assembly

Mixing drum mouth facing up, locate the completed stand onto the axle, and secure with the Hex. Head bolt M10x25 (7). Pull the mixer handles back to tilt the mixer while leaving it on the floor. Then standing to one side of the mixer place one hand on the top lip of the drum mouth and one hand on the handle and lift the combined mixer and stand upright. You might require the help of a second person. Reverse the above actions to lower the mixer to the floor and remove the stand.

Hex-Head bolt M10x25



Operation

Intended Use

WARNING!

Check the rated output of your power source. It must match/comply with the information on the ratings label of the specific mixer you intend to use.

JCB-CMH150P is only suitable to be used for mixing cement, water and aggregates up to the maximum mixing capacity specified. This product must not be used for any purposes other than those described.

General Operation

- > Check the product, its power cord and plug as well as accessories for damage before each use. Do not use the product if it is damaged or shows wear.
- > Double check that accessories are properly fixed.
- > Always hold the product by its handle. Keep the handle dry to ensure safe support.
- > Ensure that the air vents are always unobstructed and clear. Clean them if necessary with a soft brush. Blocked air vents may lead to overheating and damage the product.
- > Switch the product off immediately if you are disturbed while working by other people entering the working area. Always let the product come to complete stop before leaving it. Do not overwork yourself. Take regular breaks to ensure you can concentrate on the work and have full control over the product.

WARNING!

Keep a safety distance of 1m from the front of the machine when discharging.

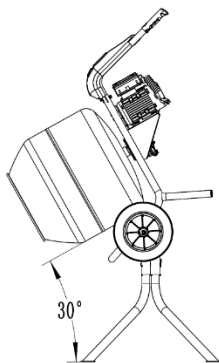
Working Positions

The mixer has 3 working positions:

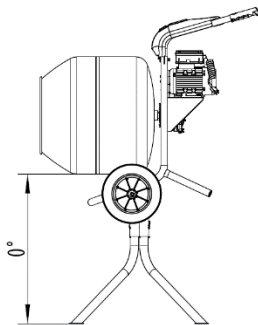
Loading & Mixing - Use this position when loading the machine. Suitable for wet mixing i.e. Concrete and Mortar

Discharging – Put the machine into this position when mixing is finished. Put a wheel barrow or suitable container at the mouth of the mixer and tilt.

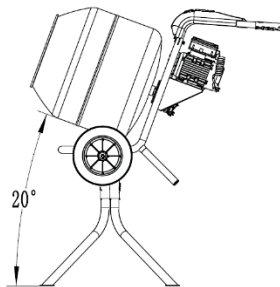
Neutral – This position can be used for dry mixing. As the angle is neutral it can reduce the amount of airborne dust



Discharging



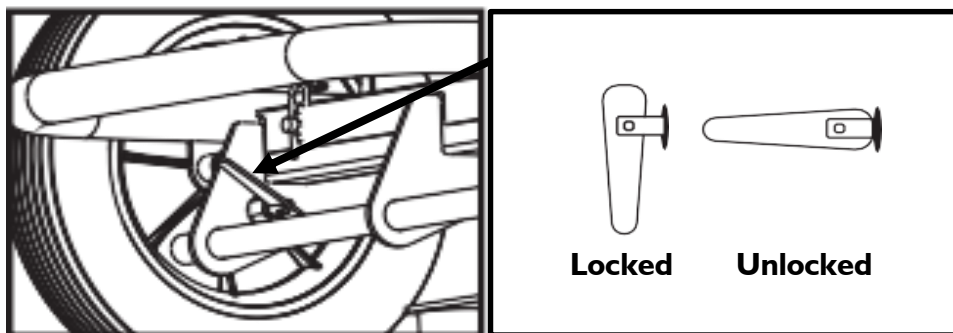
Neutral



Loading

Tilt Lock Levers

The mixer has 2 Tilt Lock Levers (front & rear) to safely lock the machine into different working positions. To adjust the working position, use the following Tilt Lock Lever configurations:



Loading (Working)

In the loading and working position, both the front and rear lock levers should be in the unlocked positions.

Discharging

Tip the mixer forward to discharge, put the front lock lever in the locked position. This prevents the mixer swinging back when discharging. The rear lock lever can remain unlocked.

Neutral

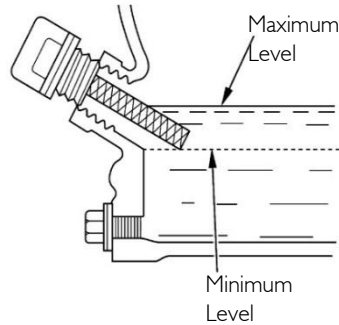
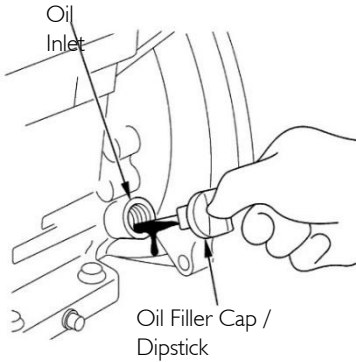
To secure the mixer in the Neutral position, unlock both levers and put the mixer into the loading position. Then lock the rear lever and tip the mixer forward until you hear an audible *click*. The mixer will now rest on the rear lever allowing for dry mixing or refuelling.

Pre-Operation Checks

Oil Level

Check Engine Oil Level Check the engine oil level with the engine stopped and in a level position.

- > Remove the oil filler cap/dipstick and wipe it clean.
- > Insert and remove the dipstick without screwing it into the filler neck. Check the oil level shown on the dipstick.
- > If the oil level is low, fill to the edge of the oil filler hole with the recommended oil .
- > Screw in the oil filler cap/dipstick securely.



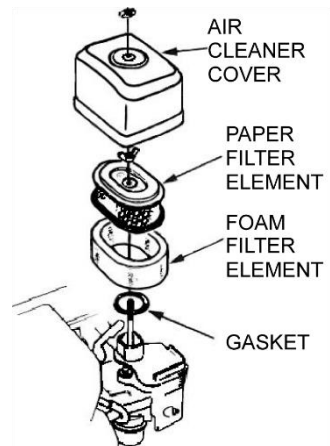
Air Filter Inspection

A dirty air filter will restrict air flow to the carburettor, reducing engine and chipping performance.

Remove the **Air Filter Cover** and inspect the filters. Clean or replace dirty filter elements. Always replace damaged filter elements.

Reinstall the air filter and air cleaner cover. Be sure all the parts shown below are in place. Tighten the wing nut securely.


WARNING! Operating the engine without an air filter, or with a damaged air filter, will allow dirt to enter the engine, causing rapid engine wear. This type of damage is not covered by the Distributor's Limited Warranty.



Check Fuel Level

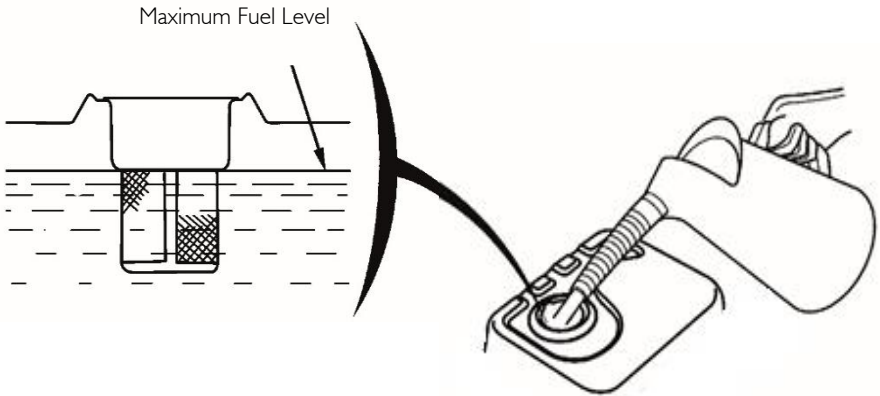
With the engine off and on a level surface, remove the fuel tank cap and check the fuel level. You will be able to see the fuel through the fuel strainer. Refill the tank if you can not see any fuel in the strainer. After refuelling, tighten the fuel tank cap securely.

Always use a funnel or Fuel Bottle with a Flexible spout like shown below

 **Petrol/Gasoline is highly flammable, volatile and corrosive. You can be burned or seriously injured when handling fuel.**

 **NEVER fill above the Maximum Fuel Level.**

Standard E10 and E5 are both suitable for use with this machine



Operation

Starting

YOU MUST READ AND FULLY UNDERSTAND THE WHOLE USER MANUAL BEFORE OPERATION.

BODY PARTS MUST NEVER BE INSERTED INTO THE INLET CHUTE DURING OPERATION, THIS WILL CAUSE INJURY AND PERMANENT DAMAGE.

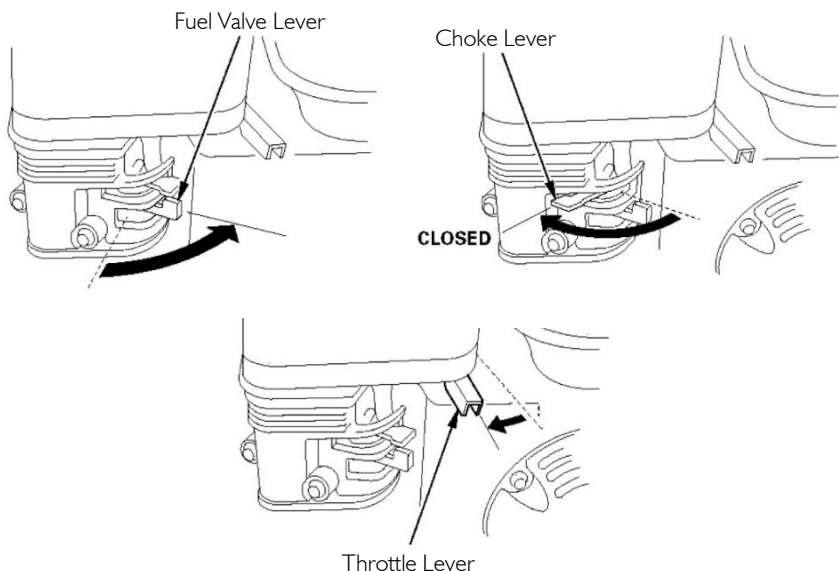
BEWARE OF TRIP HAZARDS WHILST OPERATING YOUR MACHINE. KEEP INFED AREA AS NEAT AS POSSIBLE.

Once the machine has been correctly setup with both Pre-Operation checks and water supply, the machine can be started. This will start building pressure.



NOTE- IF your machine doesn't have a Throttle Lever, it will have an automatically controlled throttle.

- > Move the fuel valve lever to the ON position
- > To start a cold engine, move the choke lever to the CLOSED position. To restart a warm engine, leave the choke lever in the OPEN position.
- > Move the throttle lever away from the SLOW position about 1/3 of the way toward the FAST position.

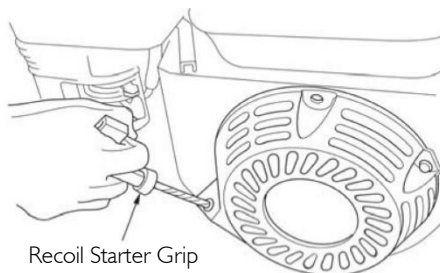
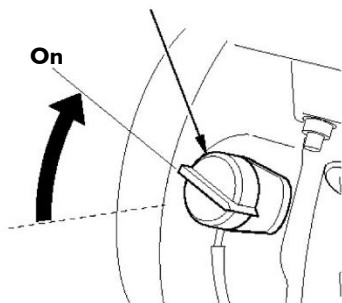


Operation

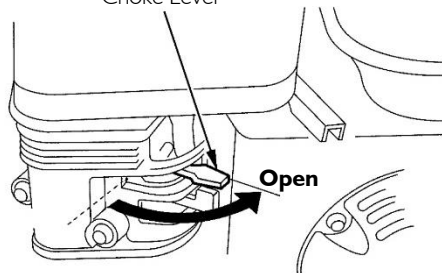
Starting

- > Turn the ignition switch to the ON position
- > Pull the recoil starter grip lightly until resistance is felt, then pull it briskly. Do not allow the recoil starter grip to snap back against the engine. Return it gently to prevent damage to the starter.
- > If the choke lever was moved to the CLOSED position to start the engine, gradually move it to the OPEN position as the engine warms up.
- > Chipper output is controlled by adjusting engine speed. Moving the throttle lever in the FAST direction will increase chipper output, and moving the throttle lever in the SLOW direction will decrease chipper output.

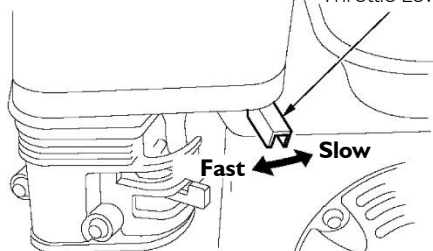
Ignition Switch



Choke Lever



Throttle Lever

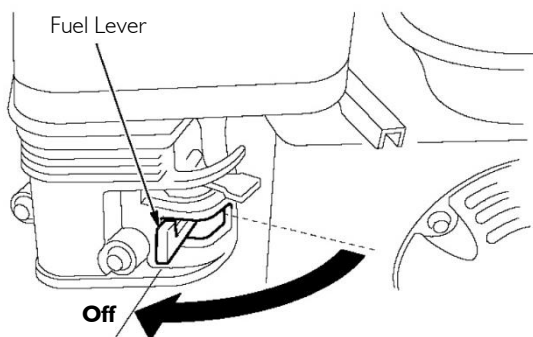
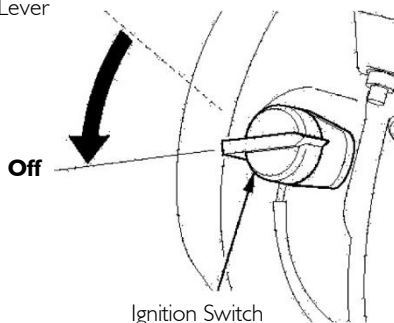
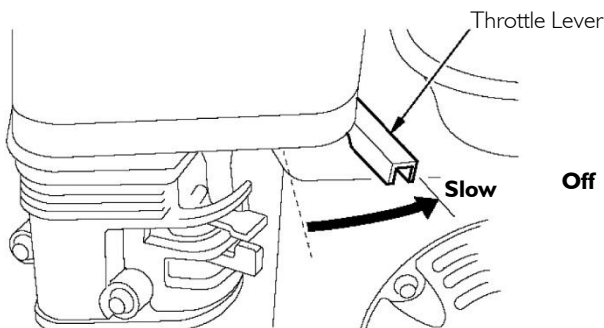


Operation

Stopping

⚠ To stop the engine in an emergency, simply press the Safety Shut off or turn the ignition switch to the OFF position. Under normal conditions, use the following procedure.

- > Move the throttle lever to the SLOW position.
- > Turn the ignition switch to the OFF position.
- > Turn the fuel valve lever to the OFF position.



Maintenance

Importance of Maintenance

Good maintenance is essential for safe, economical, and trouble-free operation. It will also help reduce air pollution. Improperly maintaining this machine, or failing to correct a problem before operation, can cause a malfunction in which you can be seriously hurt or killed

Always follow the inspection and maintenance recommendations and schedules in this owner's manual.

To help you properly care for your machine, the following pages include a maintenance schedule, routine inspection procedures, and simple maintenance procedures using basic hand tools. Other service tasks that are more difficult, or require special tools, are best handled by professionals and are normally performed by a technician or other qualified mechanic.

The maintenance schedule applies to normal operating conditions. If you operate your machine under severe conditions, such as sustained high-load or high-temperature operation, or use in unusually wet or dusty conditions, consult your servicing dealer for recommendations applicable to your individual needs and use.

Remember that your servicing dealer knows your machine best and is fully equipped to maintain and repair it.

To ensure the best quality and reliability, use only new, genuine parts or their equivalents for repair and replacement.

Maintenance, replacement, or repair of emission control devices and systems may be performed by any engine repair establishment or individual, using parts that are "certified" to EPA standards.

MAINTENANCE SAFETY

Some of the most important safety precautions follow. However, we cannot warn you of every conceivable hazard that can arise in performing maintenance. Only you can decide whether or not you should perform a given task.

Failing to properly follow maintenance instructions and precautions can cause you to be seriously hurt or killed.

Always follow the procedures and precautions in the owner's manual.

Safety Precautions Make sure the engine is off before you begin any maintenance or repairs. This will eliminate several potential hazards:

Carbon monoxide poisoning from engine exhaust. Be sure there is adequate ventilation whenever you operate the engine. — Burns from hot parts.

Let the engine and exhaust system cool before touching. — Injury from moving parts.

Maintenance

Maintenance Schedule

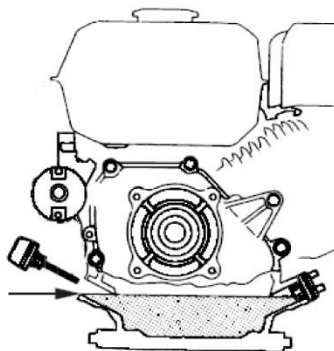
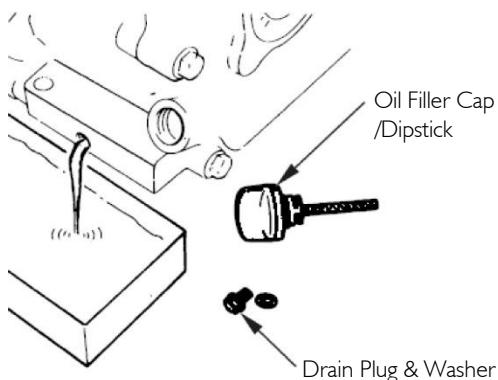
| Performed at every indicated interval. | Before Each Use | Every 3 Hours | Every 25 Hours | Every 100 Hours |
|--|-----------------|---------------|----------------|-----------------|
| Check Engine Oil Level | ● | | | |
| Check General Machine Condition | ● | | | |
| Check Belts | ● | | | |
| Clean Engine | | | ● | |
| Change Engine Oil | First 5 hours | | ● | |
| Replace Air Filter | | | ● | |
| Replace Spark Plug | | | | ● |



Maintenance - Oil Servicing

When changing a machines oil, run the machine for a few minutes. Warm oil will always drain faster and more through compared to oil that's cold.

- > Place a suitable container below the engine to catch the used oil.
- > Remove the oil filler cap/dipstick, oil drain plug and washer.
- > Allow the used oil to drain completely
- > Reinstall the oil drain plug and new washer, and tighten the oil drain plug securely. Please dispose of used motor oil in a manner that is compatible with the environment. We suggest you take used oil in a sealed container to your local recycling centre or service station for reclamation. Do not throw it in the General Waste, pour it on the ground, or down a drain.
- > 3. With the engine in a level position, fill to the upper limit mark (bottom edge of the oil fill hole) on the dipstick with the recommended oil.



Oil Grade

Use 4-stroke motor oil that meets or exceeds the requirements for API service classification SJ, SL, or equivalent. Always check the API service label on the oil container to be sure it includes the letters SJ, SL, or equivalent. SAE 15W-40 is recommended for general use.

Other viscosities shown in the chart may be used when the average temperature in your area is within the indicated range.

| | | Recommended Engine Oil Type | | | | | | | | | |
|---------------------|-------|-----------------------------|------|-----|------|------|------|------|--------|--|--|
| | | 10W-30 | | | | | | | | | |
| | | 5W-30 | | | | | | | 10W-40 | | |
| | | 5W-30 Synthetic | | | | | | | | | |
| °F | -20 | 0 | 20 | 40 | 60 | 80 | 100 | 120 | | | |
| °C | -28.9 | -17.8 | -6.7 | 4.4 | 15.6 | 26.7 | 37.8 | 48.9 | | | |
| Ambient temperature | | | | | | | | | | | |

Maintenance - Spark Plug

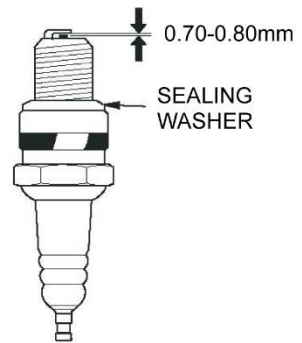
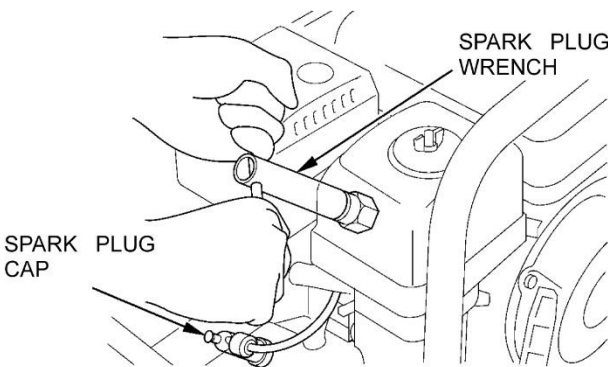


Recommended Spark Plugs – NGK:BPR7ES/Champion:RN7YC

This variation of spark plug is recommended for normal engine running conditions and temperatures.

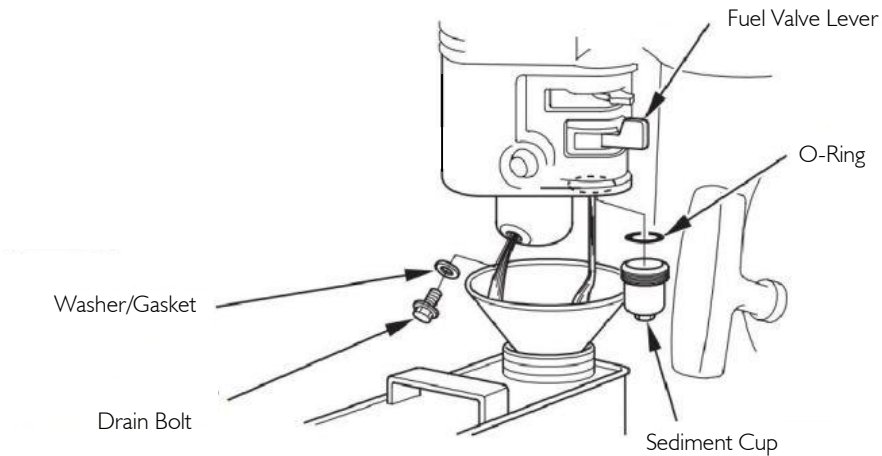
Incorrect specifications of sparkplug can cause damage to your machine. Ensure any sparkplug is correctly gapped and free of any deposits

- > Firstly remove the Spark plug cap. This is a push/pull fit.
- > Using a suitable spark plug wrench, loosen the spark plug and remove it.
- > Inspect the sparkplug. Replace if your inspection finds:
 1. Visible Damage
 2. Badly fouled with Oil/Carbon
 3. Washer health is compromised
- > Using a feeler gauge, check the gap of the spark electrode. The gap should be with these tolerances
0.7-0.8 mm (0.026-0.031 inch).
- > Reinstall the sparkplug, firstly winding it by hand, this is to avoid cross threading.
- > After properly seated, fully tighten using spark plug wrench.
- > When the washer has started to compress tighten to the following instruction:
 1. New Sparkplug – a 1/2 Turn tight
 2. Re-used Spark Plug – a 1/8 to 1/4 Turn tight



Maintenance – Sediment Filter

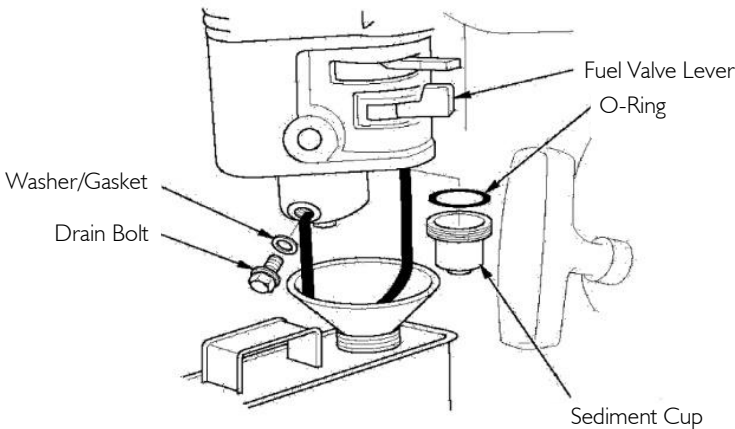
- > Move the fuel valve to the OFF position, then remove the fuel sediment cup by twisting off. Also remove the O-ring.
- > Wash the sediment cup and O-ring in non-flammable solvent, and dry them thoroughly.
- > Place the O-ring in the fuel valve, and install the sediment cup. Tighten the sediment cup securely.
- > Move the fuel valve to the ON position, and check for leaks. Replace the O-ring if there is any leakage.



Storage

Draining Fuel

- > Place an approved gasoline container below the carburettor, and use a funnel to avoid spilling fuel.
- > Remove the carburettor drain bolt and sediment cup, and then move the fuel valve lever to the ON position.
- > After all the fuel has drained into the container, reinstall the drain bolt and sediment cup. Tighten them securely.



Long Term Storage

Preventing Seizing

When storing machine for longer than a period of 8 weeks, the following procedure should be followed:

- > Remove and Replace engine oil. Remove Spark plug and pour 15ml of fresh engine oil through the sparkplug hole.
- > Pull the starter grip several times to distribute the oil around the cylinder walls.
- > Reinstall the Sparkplug. Pull the starter cord until resistance is felt. This ensures the valves are closed preventing moisture build up.
- > Return the recoil grip gently.

Troubleshooting

Engine

| Engine Will not Start | Possible Cause | Correction |
|--|---|--|
| 1. Check Control Positions | Fuel Valve OFF | Move fuel valve lever to ON position. |
| | Choke open | Move choke lever to CLOSED position unless engine is warm. |
| | Ignition Switch Off | Turn ignition switch to ON. |
| 2. Check Fuel | Out of Fuel | Refuel |
| | Bad fuel; machine stored without treating or draining gasoline, or refueled with bad gasoline | Drain fuel tank and carburettor. Refuel with fresh gasoline |
| 3. Remove and inspect spark plug. | Spark plug faulty, fouled, or improperly gapped. | Gap or replace spark plug |
| | Spark plug wet with fuel (flooded engine). | Dry and reinstall spark plug. Start engine with throttle lever in FAST position. |
| 4. Take engine to an authorized servicing dealer, or refer to shop manual. | Fuel filter clogged, carburettor malfunction, ignition malfunction, valves stuck, etc. | Replace or repair faulty components as necessary. |

| Engine Lacks Power | Possible Cause | Correction |
|--|--|---|
| 1. Check air filter. | Air filter clogged. | Clean or replace filter. |
| 2. Check fuel. | Bad fuel; machine stored without treating or draining gasoline, or refuel with bad gasoline. | Drain fuel tank and carburettor. Refuel with fresh gasoline |
| 3. Take engine to an authorized servicing dealer, or Refer to shop manual. | Fuel filter clogged, carburettor malfunction, ignition malfunction, valves stuck, etc. | Replace or repair faulty components as necessary. |



Specifications

| Model | JCB-CMH150P |
|--------------------------------------|--------------------|
| Max Drum Capacity (L) | 134 |
| Max Mixing Capacity (L) | 100 |
| Drum Diameter (cm) | 60 |
| Discharge Outlet Height (cm) | 104 |
| Wheels (cm) | 30.0 x 8.0 |
| Operating Dimensions (cm) | 143 x 130 x 73.5 |
| Storage Dimensions (cm) | 96 x 65.5 x 91.5 |
| Weight (kg) | 73 |
| Engine Fuel Type | Petrol |
| Rated Power (kW) | 3.2 |
| Engine Speed (RPM) | 3200 |
| Drum Speed (RPM) | 28-32 |
| Sound Power Level LWA (dB(A)) | 96.32 |
| Guaranteed Sound Power Level (dB(A)) | 101 |



Cleaning the drum

- > Clean the machine after every use. When you are finished with mixing, rinse the inside of the drum to loosen up all debris. IF there's more stubborn material stuck to the inside of the drum carry out the following:
 1. Put the machine into the loading position and turn on.
 2. Add water, then add aggregate or small gravel chippings.
 3. Let this mix until all the material from the inside of the drum has been removed.
 4. Tilt the machine forward and discharge the contents. Always discard contents responsibly.
- > Dry the machine as best as possible after each clean. This will help prevent any corrosion or rust.
- > Ensure any aggregate or stones are not stuck into the mixing blades. After each use, with the machine off check the mixing blades are free of any debris.

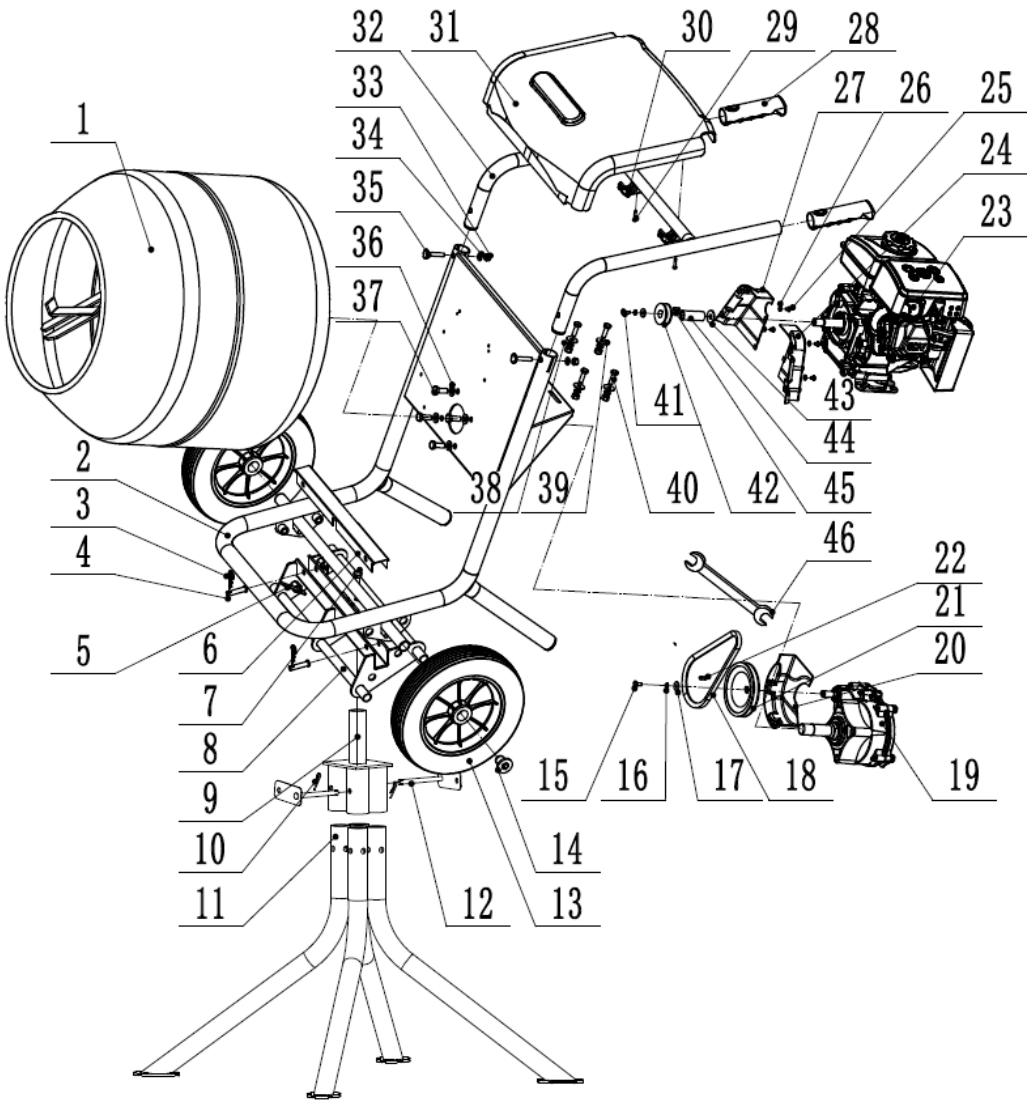
Storage

- > Store the machine and its accessories in a dry, frost-free place.
- > Always store the machine in a place that is inaccessible to children. The ideal storage temperature is between 10 and 30°C.
- > we recommend using the original packaging for storage or covering the product with a suitable material to protect it against dust.
- > Always drain your machine of Fuel and Oil for long term storage.

Transportation

- > Ensure the engine switch is off before transporting.
- > Ensure the machine is always transported
- > Always carry the machine by its handles.
- > Protect the machine from any heavy impact or strong vibrations which may occur during transportation in vehicles.
- > Secure the machine to prevent it from slipping or falling over.

Parts Diagram



Parts List

| No. | Description | Q'ty | No. | Description | Q'ty |
|-----|------------------------|------|-----|--------------------------|------|
| 1 | Mxing Drum | 1 | 24 | Belt Cover-L | 1 |
| 2 | Chassis | 1 | 25 | Cross Headed Screw M5x10 | 6 |
| 3 | R Clip Φ 2 | 2 | 26 | Spring Washer M5 | 6 |
| 4 | Pin Φ 10x42.5 | 2 | 27 | Belt Cover-R | 1 |
| 5 | Lock Pin | 2 | 28 | Hand Grip | 2 |
| 6 | Swivel Unit Cover | 1 | 29 | Tapping screw St4.8x25 | 2 |
| 7 | Hex head bolt M10x25 | 1 | 30 | Block | 2 |
| 8 | Stand/tilt Swivel Unit | 1 | 31 | Engine Cover | 1 |
| 9 | Stand Connector | 1 | 32 | Handle | 1 |
| 10 | R Clip Φ 3.4 | 2 | 33 | Lock nut M8 | 2 |
| 11 | Stand | 4 | 34 | Flat Washer M8 | 2 |
| 12 | Pinned Plates | 2 | 35 | Nut M8x45 | 2 |
| 13 | Wheel | 2 | 36 | Flat Washer M10 | 4 |
| 14 | Wheel Bung | 2 | 37 | Hex.head bolt M10x25 | 4 |
| 15 | Hex head bolt M6x16 | 1 | 38 | Spring Washer M8 | 4 |
| 16 | Spring Washer M6 | 1 | 39 | Flat Washer M8 | 4 |
| 17 | Circlip | 1 | 40 | Head.head bolt M8x25 | 4 |
| 18 | Belt | 1 | 41 | Head.head bolt | 1 |
| 19 | Gearbox assembly | 1 | 42 | Small Pulley | 1 |
| 20 | Belt Cover-U | 1 | 43 | Circlip | 1 |
| 21 | Big Pulley | 1 | 44 | Shaft sleeve | 1 |
| 22 | Key 4.8x14 | 1 | 45 | Key 4.8x18 | 1 |
| 23 | Engine | 1 | 46 | Wrench | 1 |

Warranty

Proof of purchase will be required before you make a warranty claim. Full warranty terms and conditions can be found on the support website:

www.jcb-tools.co.uk

Manual Updates

Our manuals are constantly being reviewed and updated. Should you find an error, omission or something unclear, please contact us for assistance. We reserve the right to make any modifications without prior notice whenever necessary.

Our latest manuals are also placed online. All our manuals can be downloaded at: www.jcb-tools.co.uk

Returning Your Product

If you are returning your product, please contact the dealer for their returns policy.

Leaving a Review

We work very hard to give all of our customers the best possible service. If you have any problems, before leaving negative feedback, please contact us to give us a chance to resolve the issue. We would be delighted if you left us positive feedback! To leave a review, please go to: uk.trustpilot.com

Ordering Spare Parts

You can find the spare part you are looking for at power-spareparts.co.uk



Contact Us

Need Help? Talk To Our Experts

Our friendly aftersales team will be more than happy to help you.

**Phone**

Call our team on 01646 687 880

**Email**

aftersales@genpower.co.uk

**Post**

JCB Tools, Isaac Way, Pembroke Dock, Pembrokeshire, SA72 4RW.

**Support Website**

Go to www.jcb-tools.co.uk

CE DECLARATION OF CONFORMITY

We,
JCB Tools

Declare that the product:

Description
Petrol Cement Mixer
Type
JCB-CMH150P
Function
Mixing Concrete, Water & Stones

Complies to the Following Directives;

EC Machinery Directive - **2006/42/EC**
EMC Directive - **2014/30/EU**
EC RoHs Directive – **2011/65/EU 201/863**
WEEE Directive – **2012/19/EU**

Complies to the following Requirements and Documents;

EN 12151:2007
EN ISO 12100:2010
EN ISO 14982:2009

The person authorized to compile this technical file:

Date: 01/02/2024

Signature



Name/ title: Roland.J.Llewellyn / Managing Director
JCB Tools are a Licensee of J.C.Bamford Excavators Ltd, operated via Genpower Ltd.
Address: JCB Tools, Isaac Way, Pembroke Dock, SA72 4RW